

# WOLSEY LODGES

## How Park Farm

Page No. 41

How Park farm, a glorious flint and chalk house dating from the 17th century, overlooks the River Test - offering arguably the finest chalk stream fishing in the world. The Clarendon Way runs by the gate, and for trout fishermen, the imaginatively restored John of Gaunt lakes are just a five minute walk away.

The house is tastefully decorated, warm, comfortable and a real home. There is a well stocked library for bookworms, a piano waiting to be played in the traditional drawing room and a secluded walled garden and orchard to enjoy, where chickens and peafowl scratch contentedly under apple, plum and greengage trees.

The large, double room features original oak beams, a blue draped canopy bed, and en suite bathroom. It is south facing, with sweeping views over the valley and the Forest of Bere.

### Your Hosts

Over the last three years Caroline has been restoring seven acres of ground alongside the house which, when fully landscaped, will be ideal for a leisurely stroll by the lake with either the peafowl - or her two black Labradors - as companions. The new terrace forms a perfect location for tea or, for the energetic, a game of Prescott - free croquet!

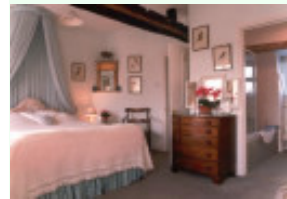
Caroline's breakfasts are a memorable occasion; fresh eggs from the hens, with numerous homemade jams and marmalades. Dinners are available, occasionally, by arrangement

### The Location

To the north of How Park Farm lies Stockbridge, famous for its coaching inns, fishing, antiques and art galleries. Winchester, the ancient capital of England is south east, with the New Forest and Romsey to the south. Salisbury, with its magnificent Cathedral, and Stonehenge, is to the west. Goodwood for racing and motor racing and Beaulieu with its famous motor museum are also within easy reach.

### Finding Us

From Stockbridge take A3057 south towards Romsey, upon entering King's Somborne take the first right up Cow Drove Hill. At top of hill turn left and proceed along the tarmac road for 1/3 mile to T-junction. Continue then for 100 yards on gravel track, turning right by How Park Farm sign (in paddock) through black gate.



Mrs C J Halse

How Park Farm  
King's Somborne, Stockbridge,  
Hampshire SO20 6QG  
England  
Tel: 01794 388716  
[info@howparkfarm.com](mailto:info@howparkfarm.com)  
[www.howparkfarm.com](http://www.howparkfarm.com)

(All bedroom prices are per person, per night, including breakfast)

- Closed occasionally
- 1 Double Room (en suite) £50
- Breakfast Only

