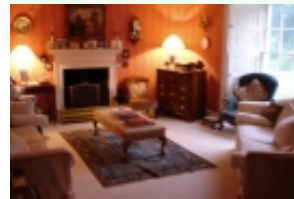


WOLSEY LODGES

Landewednack House

Page No. 11

Situated at the most Southerly point in its own private grounds this capitavating property invites you to simply indulge. Landewednack is situated overlooking the Atlantic Ocean where its panoramic views are breathtaking. Its lovingly tended two acre gardens with twisting paths and lush planting bring a feeling of tranquillity, charm and elegance. For those of you who are feeling energetic a turn of croquet on the lawn or a dip down at the gated heated swimming pool. Whether you are searching for complete relaxation in luxurious surroundings or an energetic break with coastal walks of beauty beyond description, Landewednack is the perfect choice.



Each private guest room has been individually styled to offer a first class welcome to the weary traveller. Meticulous steps have been taken to assure a luxurious memorable stay. Added to this there is a gastronomic journey afforded to guests by the resident private chef. Locally sourced and French fare is served in the relaxed atmosphere of the dining room. Should your taste also include superb wine then the choice is exceptional and sourced from the family's extensive wine cellar. Guests are also welcome to hire one of the family's boats moored at the nearby picturesque Helford River, a wooden punt for the river or a 40 foot wooden ketch with crew provided.

Your Hosts

Guests are warmly welcomed by hosts Sue, and Antony our manager and private chef. Sue's husband Erik runs a food and wine import business whilst she dedicates her time between her exquisite home, garden and the guests.

The Location

Drink in the magnificent views whilst taking one of the many coastal footpaths, play a round of golf, or ride along the sands at the gallop. Of course you could just bathe and snorkel your way around the dramatic coastline. Close by: Eden Project, Maritime Museum and the celebrated Tate Gallery.

Finding Us

From Helston take A3083 to Lizard village. Before entering village turn left signed Church Cove. Take next left signed Church Cove and Lifeboat station. Landewednack is on left.

Sue Thorbek & Antony Taylor

Landewednack House
The Lizard,
Cornwall TR12 7PQ
England

Tel: 01326 290877 or 01326 291000
Fax: 01326 290192

luxurybandb@landewednackhouse.com
www.landewednackhouse.com

(All bedroom prices are per person, per night, including breakfast)

- Closed Christmas
- 2 Double Rooms (en suite) £63-£75
- 1 Twin Room (private) £63-£75
- 1 Single Room (private) £63-£75
- Single Supplement £25
- Dinner £38

