

# WOLSEY LODGES

## Haughley House

Page No. 81

Set in the historical surroundings of a small village in the heart of Suffolk, the imposing timber framed Haughley House is a late medieval manor.

Inside the manor there is a sumptuous mix of high quality Georgian furniture and exquisite silk lined walls. Antique weapons, fans and plates add to the country house style of a more leisurely age. Guests will be offered tea and home made cakes upon arrival.

All three guest bedrooms are in the oldest part of the house and original oak beams are visible in all three. Both double rooms have period beds (including a majestic mahogany four poster) and en suite shower, whilst the twin room has en suite bath and shower. The comfortable sitting room offers a quiet retreat all year round and a log fire burns in winter.

Outside, the three acre garden has well stocked flower beds and guests can relax in the shade of the ancient Cedar of Lebanon and magnificent beech tree. There is also a Victorian greenhouse where guests can sit and relax on cooler days. The orchard and walled kitchen garden provides virtually all the vegetables for the house, whilst the host's own flock of hens provide eggs for the table and their stock provides beef and game for the guests.

### Your Hosts

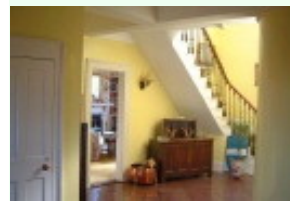
Jeffrey is Lord of the Manor and was once a cavalry officer before running a commercial business in London. Presently he is Chairman of the Parish Council. He and his wife Caroline are keenly interested in hunting, shooting, food and wine. All food is prepared using only the finest ingredients and cooked on the Aga.

### The Location

The Manor is set within a village conservation area. Within half an hour of Haughley is the Georgian market town of Bury St Edmunds and the villages of Lavenham and Long Melford.

### Finding Us

From the A14, take exit 48. After 0.5 of a mile take right hand fork, house is 100 yards on right.



### Jeffrey & Caroline Bowden

Haughley House  
Haughley,  
Suffolk IP14 3NS  
England

Tel: 01449 673398

Fax: 01449 673170

[bowden@keme.co.uk](mailto:bowden@keme.co.uk)

[www.haughleyhouse.co.uk](http://www.haughleyhouse.co.uk)



(All bedroom prices are per person, per night, including breakfast)

- Closed occasionally
- 2 Double Rooms (en suite) £45
- 1 Twin Room (en suite) £45
- Single Supplement £15
- Dinner £25
- Supper £18

