

WOLSEY LODGES

Oldfield House

Page No. 26

Approaching Snelston along a narrow lane you catch glimpses through the trees of the idyllic parkland and pasture valley which surrounds this classic estate village.

Oldfield House, wrapped in climbing roses and wisteria, is a listed brick building with lovely sandstone mullioned windows, leaded lights and striking chimneys.

Family portraits and porcelain adorn the comfortable drawing room, elegant dining room and cosy library. Two bedrooms, each with original Victorian fireplaces, are beautifully decorated and classically furnished. The bathrooms, one with a lovely view of the garden, have large cast iron baths to wallow in, excellent showers and all the accessories you need.

The serene one acre garden is a delight. Wander beyond deep herbaceous borders along grassy paths to a brook and newly created woodland garden planted with wood anemones, hellebores, narcissus, bluebells and foxgloves.

Your Hosts

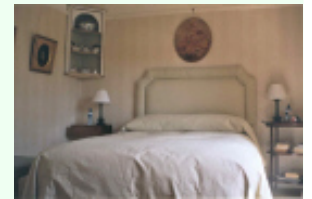
A warm hearted welcome awaits from Sue, Edmund and the Labradors. Sue, a Cordon Bleu cook, is down to earth, cheerful and meeting people gives her enormous pleasure. Edmund was a tea planter in India for five years before returning to a career in exports taking him to forty countries. These days he's often found in the garden with a wheelbarrow or sitting on a lawnmower.

The Location

Oldfield House is perfectly placed for exploring the beautiful Derbyshire Dales, the Peak District National Park and for visiting great houses nearby including Chatsworth, Kedleston, Haddon, Hardwick, Calke Abbey, Sudbury and Melbourne Hall. Uttoxeter Racecourse is about 20 minutes away. Fly fishing is available on the Dove.

Finding Us

From Ashbourne take A515 towards Lichfield and after about 3 miles turn right on a bend at sign for Snelston. Follow road 1¼ miles to centre of village, passing a gate lodge and church on right and red telephone kiosk on left. The house is opposite the stone cross. Turn right here and first left to rear of house.



Edmund & Sue Jarvis

Oldfield House

Snelston, Ashbourne,
Derbyshire DE6 2EP
England

Tel: 01335 324510

s-jarvis@tiscali.co.uk

www.oldfieldhouse.uk.com



(All bedroom prices are per person, per night, including breakfast)

- Closed Christmas & New Year
- 1 Double Room (en suite) £47.50
- 1 Twin Room (private) £47.50
- Single Supplement £15
- Dinner £28

